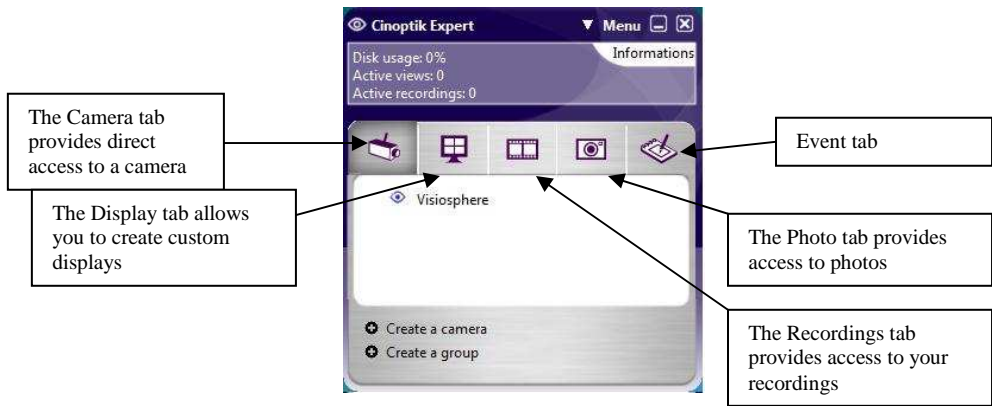


QUICK-START GUIDE TO USING CINOPTIK VISIOSPHERE

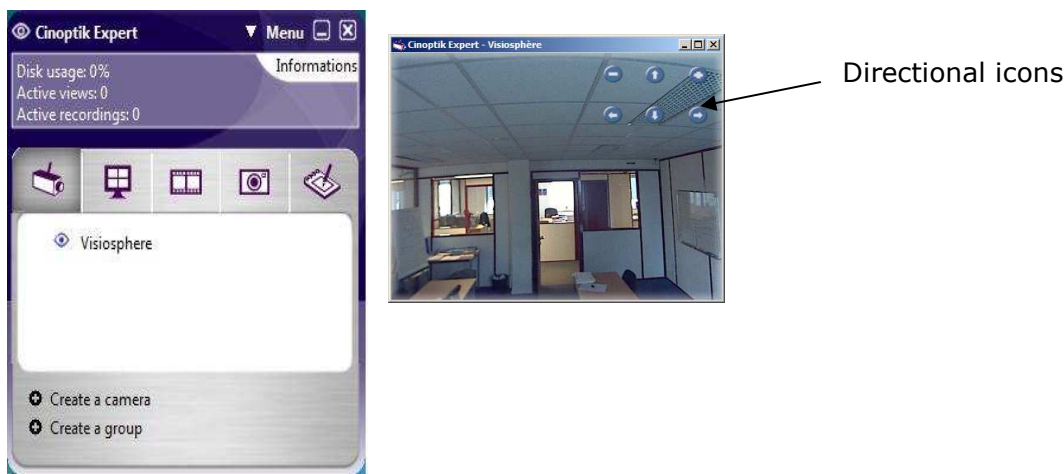
This guide describes the use of Cinoptik VisioSphère. The VisioSphère Sentinel enables you to deliver all-round, fully ready-to-use views of your site by means of 4 local images. It's as though there were four cameras in one. Cinoptik VisioSphère records site images either continuously or triggered by an event.

I – PRESENTATION OF THE CINOPTIK EXPERT INTERFACE



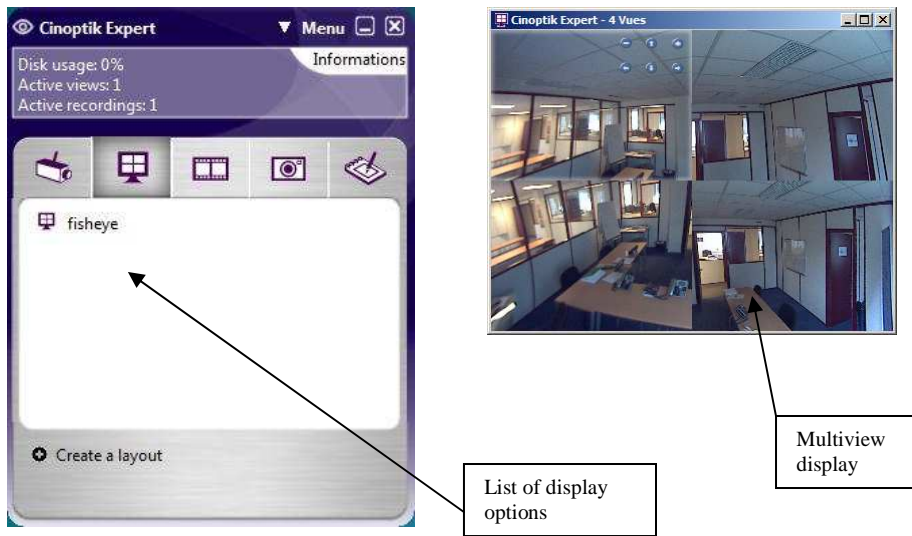
II – VIEWING USING VISIOSPHERE

A) Standard viewing



Click on the **Camera** tab and select the VisioSphère camera to be viewed. Once this view is displayed, use the direction arrows on your keyboard to change your angle of vision and the "PG UP" (page up) and "PG DWN" (page down) keys to zoom in and out. You can also use your mouse to click on the directional icons to the top right of the image (directional icons).

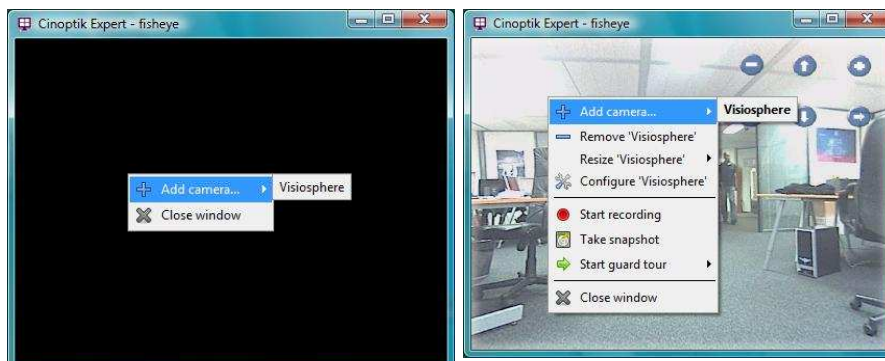
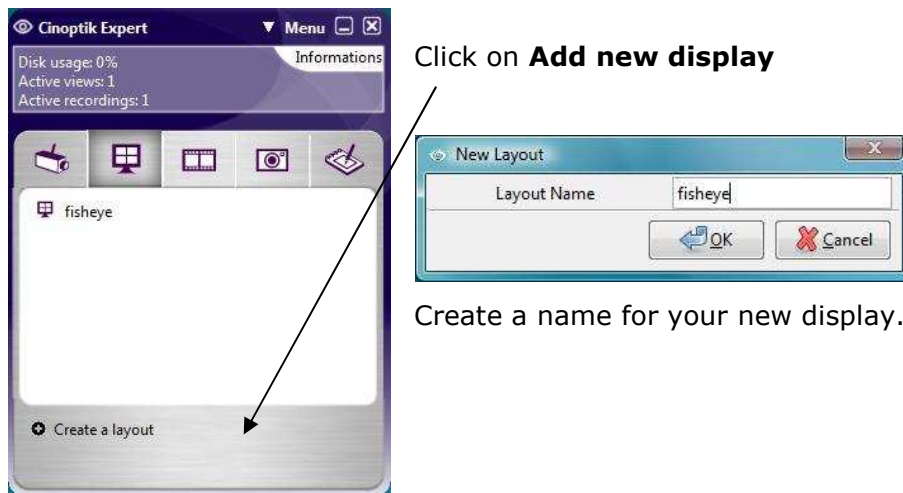
B) Multiview display



Click on the **Display** tab, then double-click on the selected display option to open the Multiview display format.

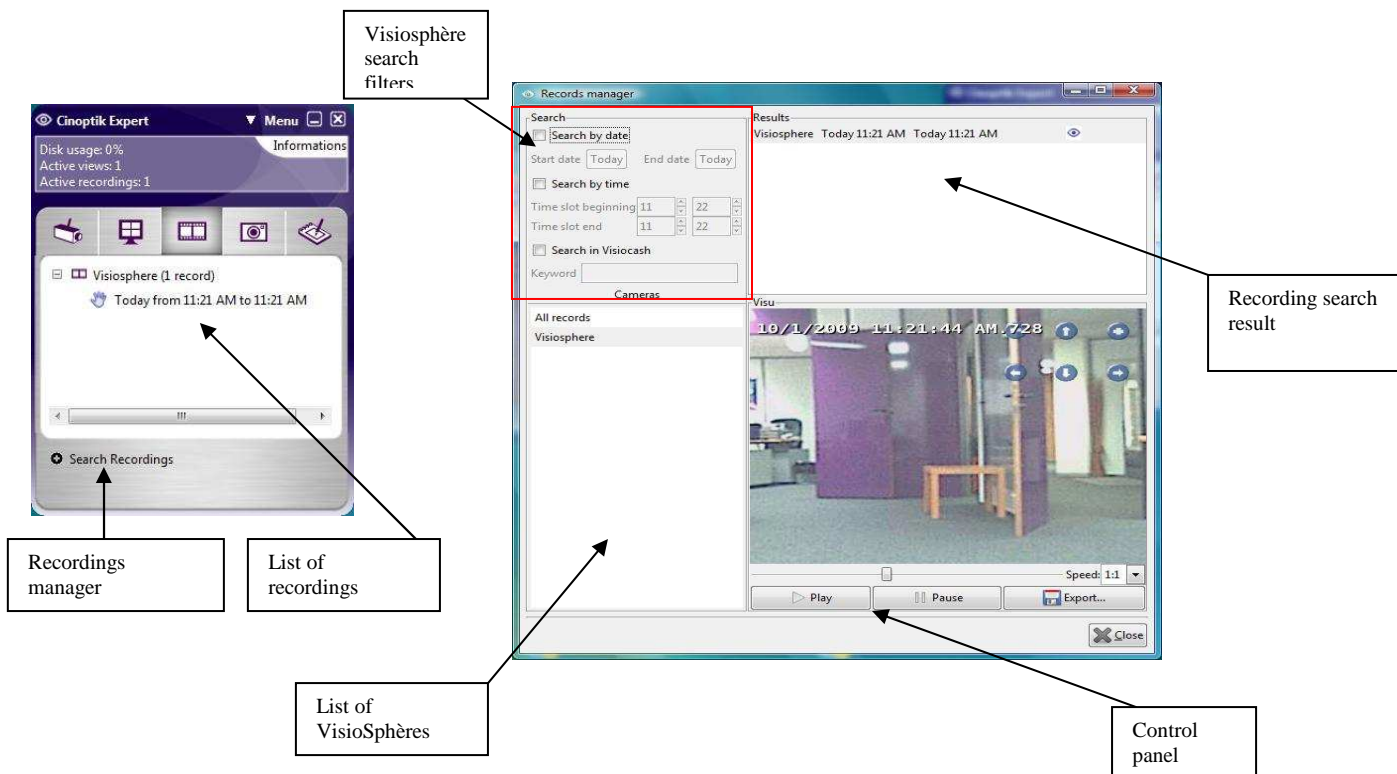
You can alter your viewing angle for each of the 4 views from your VisioSphere in the same way as for the standard display. To do this, place your mouse cursor on the view you wish to move.

III – CREATING A MULTI-VIEW DISPLAY



Right-click in the window, select **Add camera** and select your camera. Repeat this as many times as necessary until the desired number of cameras has been added.

IV – VIEWING RECORDINGS



Click on the **Recordings** tab, then double-click on the recording to be viewed. You may also click on **Search for recording** to access the recordings manager. The recordings manager window allows you to specify the properties of the recording you wish to search for.

Firstly, if you have more than one VisioSphère, you can select a given VisioSphère. The list of all the recordings from your VisioSphère will appear in the Recordings search result box.

You may filter your search to drill down within search results. To do this, check the **search by date** box to search for recordings relating to one or more given dates. You may also check the **search by time** box to narrow down the search to a specific time of day.

You may check either one or both of the two boxes.

Your search results will appear in the **search result** box. Select the recording you wish to view, and use the control panel to navigate within the recording.

If you do not apply any filters to your search, all the recordings in your VisioSphère will be returned in the 'search result' box.

In the event of any problems with use, do not hesitate to contact our User Assistance helpline on 08 11 09 21 21

END OF GUIDE